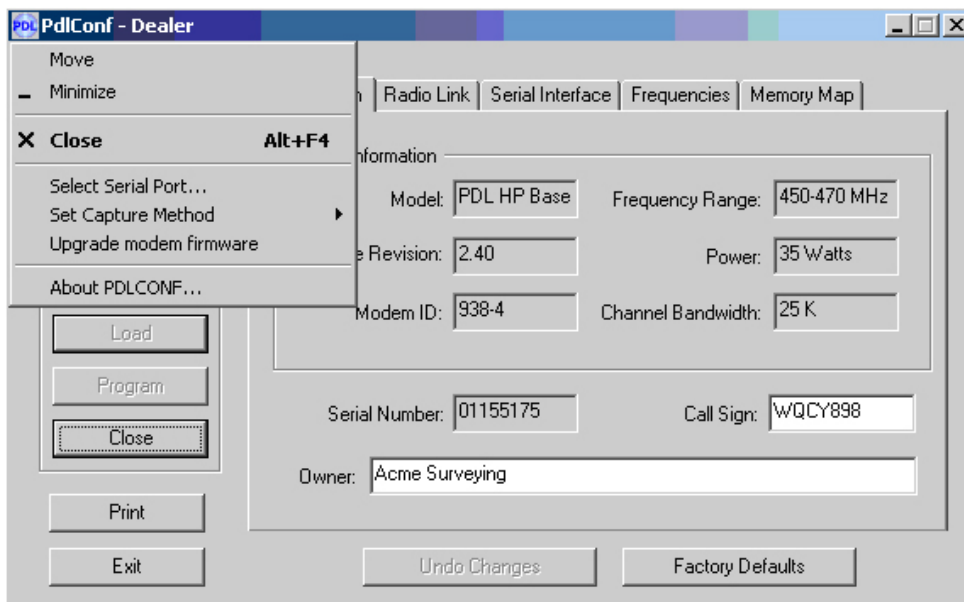


May 11, 2006

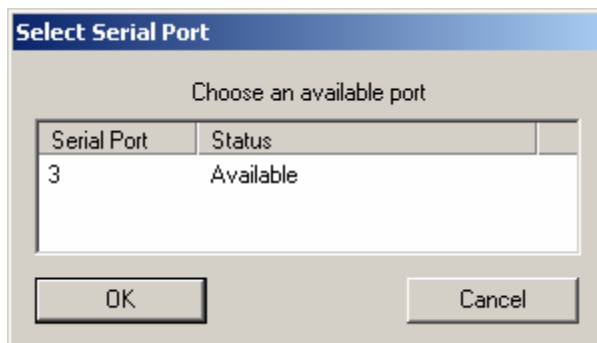
## Finding Additional Help in PDLConf

**Q:** Is there additional Help in PDLConf than what is directly found under the “Help” section?

**A:** Yes. When first loading “PDL Configure”, click on the blue PDL icon in the upper left-hand corner of the screen. A drop down menu will appear allowing access to information on serial ports, capture methods, how to upgrade the firmware and software revision information.

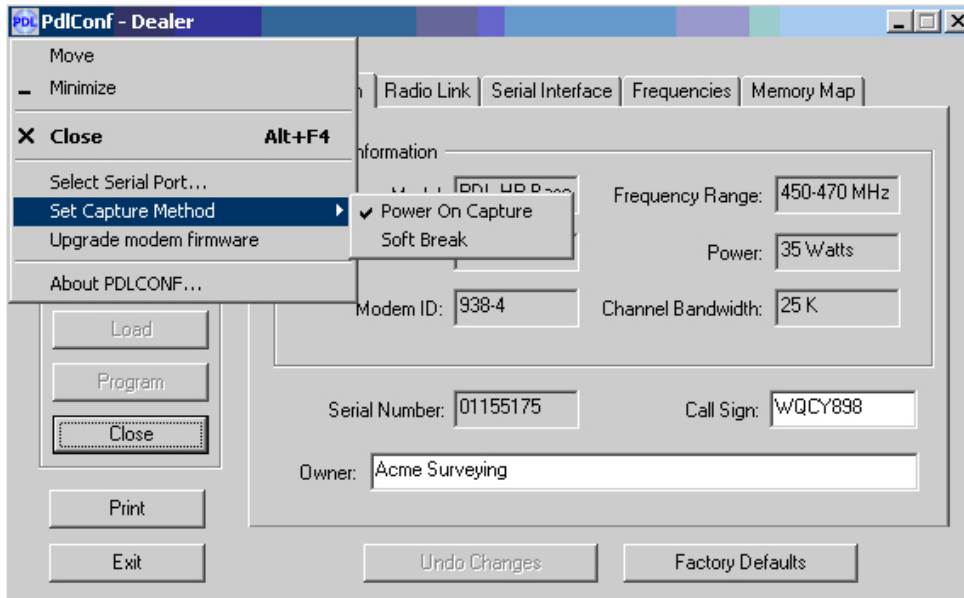


1. **Select Serial Port** – Shows which serial port is available. Note: Active Sync, Hot Sync, or other PDA software could possibly conflict with PDLConf’s ability to read the serial port. For instance, if port one is being used and it is not available because Active Sync is running on the computer, then Active Sync must be disabled and the computer must be rebooted in order to make that serial port available.

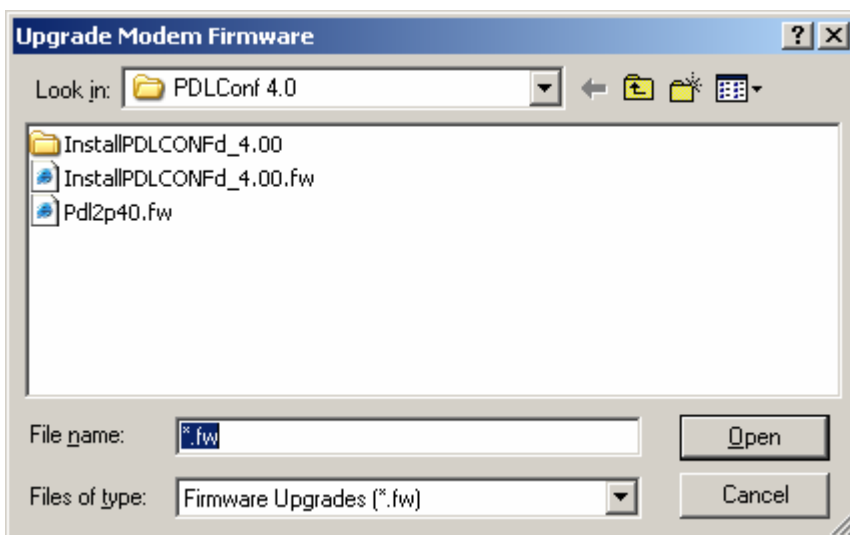


Another option may lie in using a USB port to connect with a serial port adapter. PDLConf version 4.00 does work with USB ports when connected to serial port adapters. Since there aren't any real standards for USB adapters, more than one brand may have to be tried.

- 2. Set Capture Method** – This option allows the user to change from the standard “Power On” method to the “Soft Break” method. Instead of adding power within ten seconds with the “Power On” method, power is already on in the “Soft Break” method. This method allows access to PDLConf if trouble with the “Power On” method occurs.



- 3. Upgrade modem firmware** - Allows the user to upgrade the modem's firmware. However, the user needs to have the latest firmware upgrade file already on the computer and in a place that can be found by browsing. When the process is completed, cycle the power on the modem and reload PDLConf.



4. **About PDLConf** – Shows which version of PDLConf the user is running. *Note: The latest version is 4.0.*

