



## **Assembling the ADL Vantage Vehicle Mount**

Pacific Crest  
510 DeGuigne Drive  
Sunnyvale, CA 94085

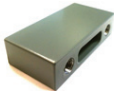







[www.PacificCrest.com](http://www.PacificCrest.com)

December 2011  
P/N: 87428-00 REV B

# Assembling the ADL Vantage Vehicle Mount



## KIT CONTENTS\*

QTY	DESCRIPTION		QTY	DESCRIPTION	
1	Bracket Bar		1	Vehicle Mount Adaptor (85069-01 Kit)	
2	Radio Clamp		4	Vibration Isolation Mounts (85069-01 Kit)	
1	Radio Mounting Bracket		2	Magnet Mounts (85069-02 Kit)	
4	3/8-24 .50 button head screw		2	10-24 .25in button head screws (85069-02 Kit)	

\*Kit contents may vary from images shown

## Radio and Mount Assembly

The following procedure is for mounting the ADL Vantage inside the cabin of a vehicle.

### Step 1:

Line up *Radio Clamps* alongside the ADL Vantage and insert the clamps between the radio's grills.

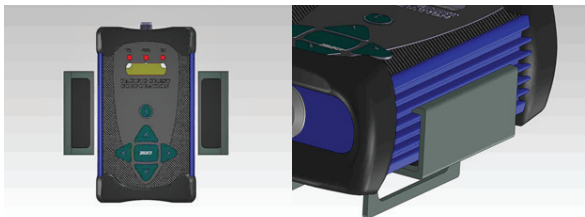


Figure 1

### Step 2:

Line up the *Bracket Bar* as shown in Figure 2. Make sure the two slots in the bar, shown in Figure 3 Inset, are facing up in the direction of the radio's TNC connector.

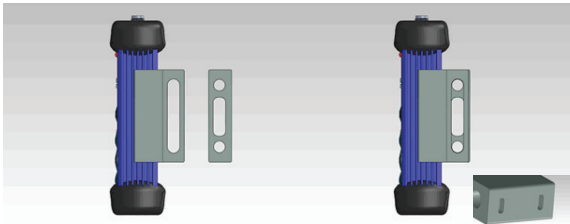


Figure 2: Inset – Slots on Bracket Bar

Step 3:

Use the four 3/8-24 screws provided to fasten the *Radio Clamps* and the *Bracket Bar* together as shown in Figure 3.

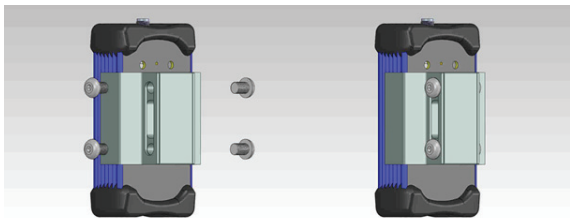


Figure 3

**Step 4:**

Fix the *Radio Mounting Bracket* in an appropriate location inside the cabin of the vehicle

**Step 5:**

Line up the radio assembly with the *Mounting Bracket* as shown in Figure 4. Insert the *Bracket Bar* into the *Radio Mounting Bracket* and screw down the thumbscrew ensuring the keys on the thumbscrew plate are aligned with the slots on the bracket bar shown in Figure 4 Inset.

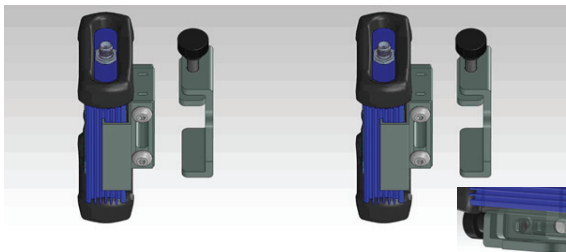


Figure 4: Inset – Screw plate's keys in Bracket Bar's slots

## Setting up External Cabin Vehicle Mount Adapter

The following procedure is for fixing the radio outside the cabin on existing mounting system.

### Step 1:

Fix the adapter plate onto the *CAT Radio Bracket* outside the cabin of the vehicle using the provided rubber damper mounts.

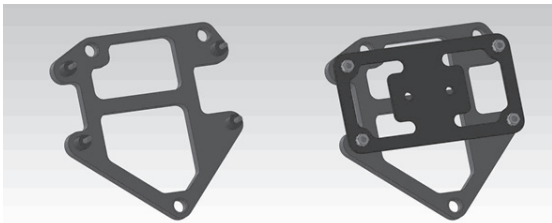


Figure 5: Left – Screw Damper Bolts onto the CAT Radio Bracket.  
Right – Insert adapter plate onto the damper bolts.  
Screw tightly in place using provided M6 nuts.

### Step 2:

Line up the screw holes on the adapter with the *Radio Mounting Bracket* and fasten together using two 3/8-24 screws (provided with the adapter) Figure 6 right.

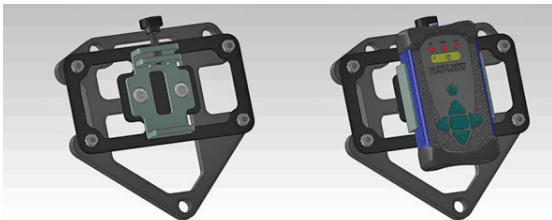


Figure 6: Left – Radio mounting bracket  
Right – Completed external assembly

### Step 3:

Place the ADL Vantage radio on the *Radio Mounting Bracket*, line up the keys on the screw plate with the slots on the *Bracket Bar* and screw down the thumbscrew till unit is firmly fixed in place.

## Setting up Bracket with Magnet Mounts

The following procedure is for attaching the *Magnet Mounts* onto the *Vehicle Mount Bracket*.

### Step 1:

Remove magnets and 2x 10-24 screws from packaging.

### Step 2:

Align magnets with the screw holes on the bracket and screw in the 10-24 screws. Tighten screws till magnets are securely fastened to the bracket.

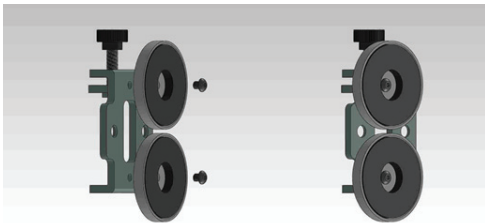


Figure 7